

Ablative Coated Batt

Fire protection solution for large voids in walls and floors

As part of the comprehensive FirePro® range of fire protection products, FirePro® Ablative Coated Batts are used to firestop mechanical and electrical services where they pass through fire rated walls and floors.

Tested to BS 476: Parts 20 & 22: 1987 and EN: 1366-3: 2009, FirePro® Ablative Coated Batts will provide up to 4 hours fire protection.

Advantages

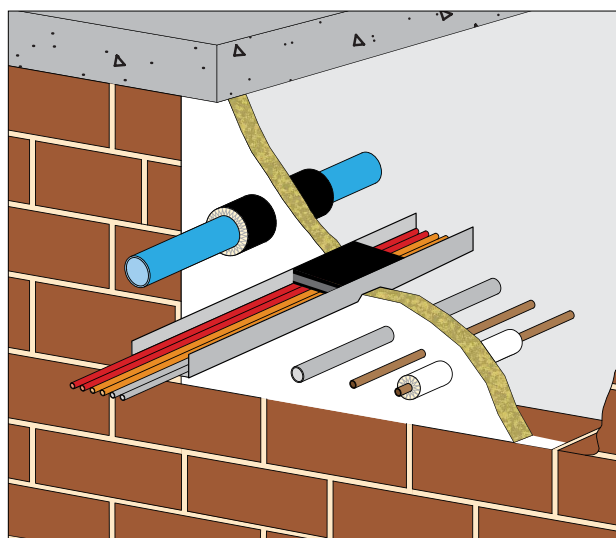
- Resist the passage of smoke
- Up to 4 hours fire rating
- Simple installation
- Suitable to make good around most types of service penetrations
- Light weight
- Tested to Rw 57
- Maintenance free

Description

FirePro® Ablative Coated Batts are manufactured by spraying high-density rockwool with a fire rated Ablative Coating.

The FirePro® Ablative Coated Batts are simply cut and friction fitted between the services and the edges of the structure. The fire rated coating is used as an adhesive to bond sections of batt together into a barrier and to the surrounding structure. All joints in the batt are pointed in with FirePro® Acoustic Intumescent Sealant to form a monolithic layer.

*Plastic pipework needs to be sleeved with FirePro® Firestop Pipe Collars prior to installation of the FirePro® Ablative Coated Batt. These must be mechanically fixed with steel angles, minimum 30mm x 30mm x 1.6mm or similar to the surrounding substrate.



FirePro® Ablative Coated Batt fitted between services and a compartment wall

For large floor openings, we would advise using FirePro® Firestop Compound (see data sheet).

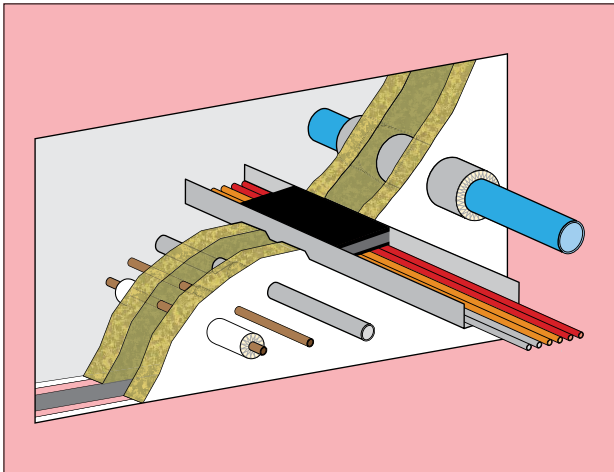
Packing

Product	Quantity
Ablative Coated Batt	6 pieces per pack

Fire Rating

Service Penetration	Integrity	Insulation	Number of layers
Concrete floor openings	4 hours	*4 hours	Single
Masonry wall openings	2 hours	*2 hours	Single
Gypsum board wall openings	1 hour	*1 hour	Dual

*Services do not achieve insulation
 Minimum thickness of masonry wall - 100mm
 Minimum thickness of concrete floor - 150mm
 Minimum thickness of gypsum wall - 100mm



FirePro® Ablative Coated Batts sealing around an electric cable tray, copper and plastic pipes where they pass through a gypsum compartment wall.

Smoke seal

FirePro® Ablative Coated Batts will provide a smoke seal.

Installation

Masonry and concrete walls and concrete floor openings

A single layer of FirePro® Ablative Coated Batt is cut and friction-fitted into the gap between the services passing through the wall or floor and the services are covered with FirePro® Ablative Coating for 90mm each side of the barrier.

The FirePro® Ablative Coating and the FirePro® Acoustic Intumescent Sealant are used as an adhesive to bond sections of batt together and to the surrounding construction. All joints in the barrier are sealed with FirePro® Acoustic Intumescent Sealant.

The maximum size of opening in the wall or floor sealed using this method is 1200mm wide x 600mm high or 600mm wide x 1200mm high. The system is suitable to seal around the following types of services: copper, cast iron, or steel pipes up to 160mm in diameter, single cable and cables on steel trays up to 150mm wide.

Gypsum board wall openings

The opening in the partition is formed using partition stud and track sections. The exposed faces of the stud and track are faced with the same type and thickness of plasterboard that has been used for the partition linings, before the sealing system is fitted, if the partition thickness is greater than 100mm.

Alternatively, the two batts can be spaced apart such that their outer faces are flush with the outer face of the partition. In this case the framing forming the opening in the partition does not need to be faced with plasterboard.

The FirePro® Ablative Coating and the FirePro® Acoustic Intumescent Sealant are used as an adhesive to bond sections of batt together and to the surrounding construction. All joints in the barrier are sealed with FirePro® Acoustic Intumescent Sealant.

The maximum size of opening in the partition that can be sealed using this method is 900mm wide x 600mm high.

The system is suitable to seal around the following types of services: cables on steel trays, fitted with FirePro® Multi-Cable Firestop, and certain plastic pipes when fitted with FirePro® Firestop Pipe Collars. The system satisfies the integrity and insulation criteria for at least 60 minutes, excluding any service penetrations. The system satisfies the integrity criterion of the standard for at least 60 minutes when it is penetrated by services.

Specification

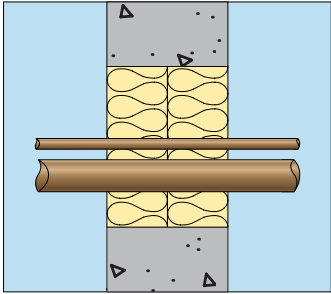
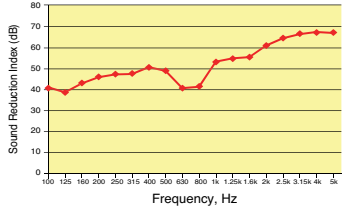
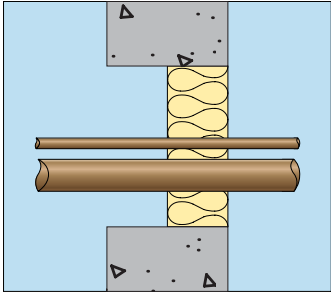
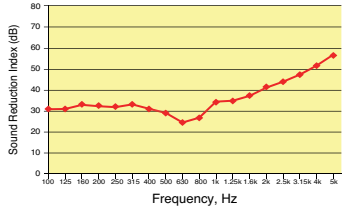
Masonry and concrete walls and concrete floor openings

The system is suitable to seal around the following types of services: cables on steel trays, fitted with FirePro® Multi-Cable Firestop and certain plastic pipes when fitted with FirePro® Firestop Pipe Collars. The system satisfies the integrity and insulation criteria for at least 60 minutes, excluding any service penetrations. The system satisfies the integrity criterion of the standard for at least 60 minutes when it is penetrated by services.

Install FirePro® Ablative Coated Batts to provide up to 4 hours fire rating where services pass through masonry or concrete walls and concrete floor openings. The installation to be fully in accordance with the manufacturer's instructions.

Gypsum board wall openings

Install FirePro® Ablative Coated Batts to provide up to 1 hour fire rating where services pass through gypsum compartment walls. The installation to be fully in accordance with the manufacturer's instructions.

Wall Structure	Specification	Sound Insulation (Rw dB)	Test Report Number Graph
Transmission Loss Tests			
	1. Wall with FirePro® Ablative Coated Batt (double layer)	52	L/2827/18/R 
	1. Wall with FirePro® Ablative Coated Batt (single layer)	34	L/2827/19/R 

FirePro® is the registered trademark of Wilhams Insulation Far East Sdn Bhd



Wilhams Insulation Far East Sdn Bhd
 15 & 17 Jalan Utarid U5/23
 Mah Sing Integrated Industrial Park
 40150 Shah Alam, Selangor, Malaysia
 Tel : +603-7846 6728 Fax : +603-7846 6540
 E-mail : wilhams@wilhams.com.my
 Website : www.wilhams.com.my

IMPORTANT NOTICE: Any directions for use are given for guidance only and are not intended to form part of any contract. They should be varied or adapted to suit your particular materials or conditions of use. Goods supplied by the company are made to approved standards from the highest quality raw materials but no warranty or guarantee is given as to their suitability for any particular purpose or application, and no liability is accepted for any loss or damage arising directly or indirectly from the use of the Company's products irrespective of any information given to us as to intended use of such products. It is therefore recommended that prospective users should test a sample of this product under their own conditions to satisfy themselves that the product to be used is suitable for that purpose intended.