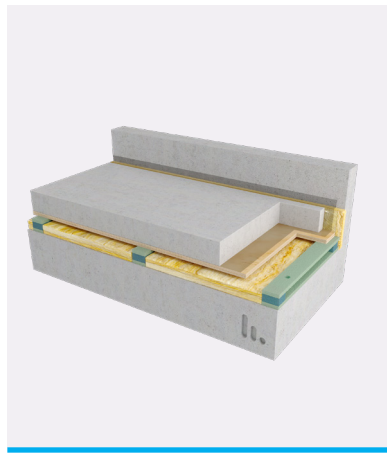


Stravifloor Batten^{*} Datasheet



Stravifloor Batten is a resilient floor batten system for the support of wet (concrete pour) or dry (panelized) floating floors with anchoring system to the base structure. The battens can be used even on inclined base structures to obtain a high acoustical performance.



CHARACTERISTICS

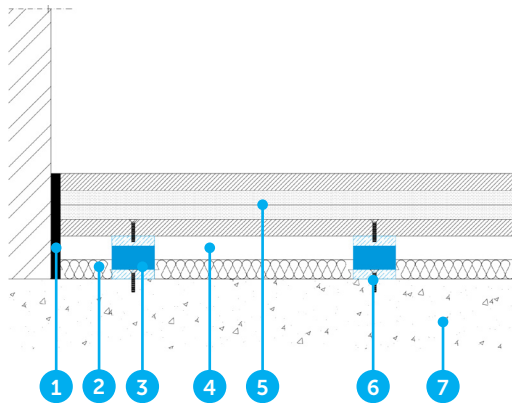
- Can support a variety of formwork such as wood-based panels, metal decking or cement particle board
- Designed to resist shear and uplift forces
- Discrete isolators are fixed to wood-based strips (MDF) at the factory
- Stravifloor Batten can be assembled with elastomeric bearings of various types and dimensions
- Highly adaptable solution with multiple variations in height, load bearing capacity and acoustic performance
- Easy and quick to install resulting in a very cost-effective solution
- Can be attached to the structural floor, allowing it to have an angle of inclination of up to 50 degrees.

*Previously known as CDM-FLOOR-T



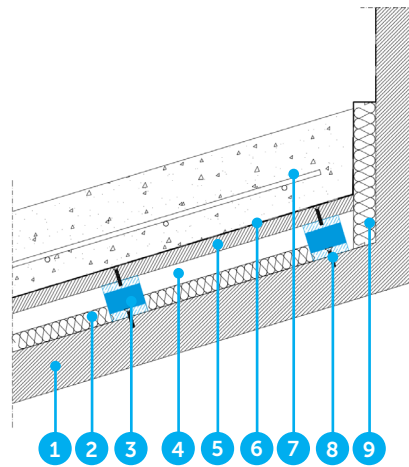
TYPICAL ASSEMBLIES

Dry - Panelized System



1. Perimeter Strip
2. Insulation material
3. Resilient battens
4. Air void
5. Load distribution layer
6. Fixations (screws)
7. Structural slab

Wet - Concrete System



1. Structural slab
2. Insulation material
3. Resilient battens
4. Air void
5. Lost formwork
6. Polyethylene foil
7. Reinforced concrete slab
8. Fixations (screws)
9. Perimeter isolation strip (e.g. Perimeter Strip)

Note: an installation manual is available upon request.

WILHAMS

Wilhams Insulation Far East Sdn Bhd

15 & 17 Jalan Utarid U5/23
Mah Sing Integrated Industrial Park
40150 Shah Alam, Selangor, Malaysia
Tel : 603-7846 6728
E-mail : wilhams@wilhams.com.my
Website : www.wilhams.com.my

DISCLAIMER

This information is accurate to the best of our knowledge at the time of issue. Information, data and recommendations provided are based on industry accepted testing and prior product usage. It is intended as descriptive of the general capabilities and performance of our products and does not endorse applicability for any particular project. We reserve the right to change products, performance, and data without notice. This document replaces all information supplied prior to the publication hereof.