



# Straviwood ModuLink Datasheet

Straviwood ModuLink is a bracket for structural joints with acoustic isolation features thanks to the resilient pads in the bracket, giving significant reduction in flanking sound transmission, making it ideal to connect contiguous modular CLT constructions.



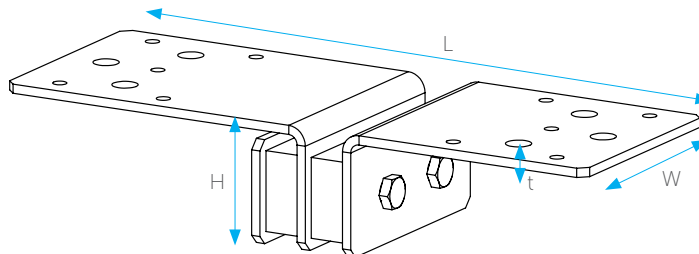
## CHARACTERISTICS

- Ideal for horizontal connection of CLT modules
- Suited for all wood-based materials
- Pre-compressed in factory
- No additional tooling required for correct installation
- Galvanized steel
- Standard dimensions: 11" (280 mm) x 4" (100 mm) x 2-1/8" (54 mm) [0.18 kips (0.8 kN) & 0.54 kips (2.4 kN)] / 11" (280 mm) x 4" (100 mm) x 2-3/8" (60 mm) [1.35 kips (6kN)]
- Applicable for moisture content in service class 1 and 2 (EN 1995-1-1:2004+A1:2008)



## DIMENSIONS

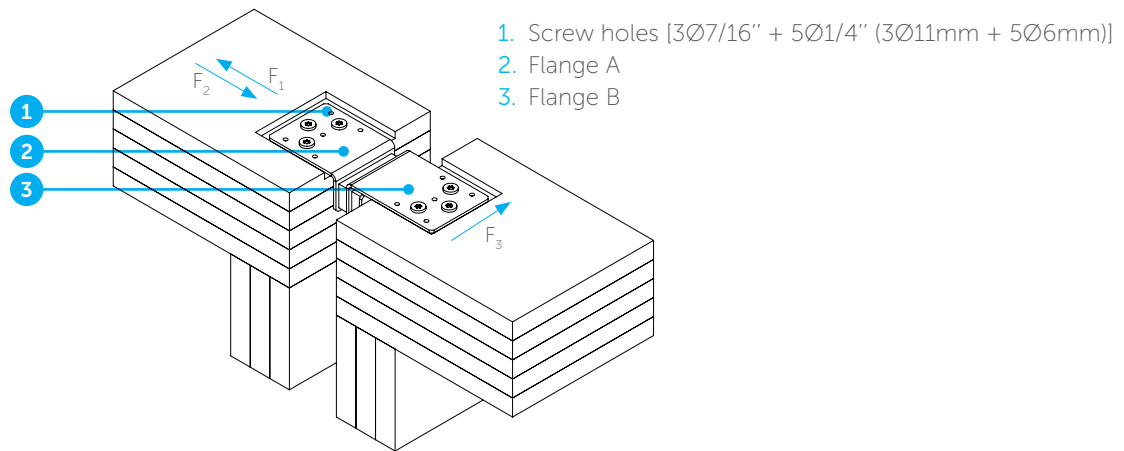
Type	Length [inch (mm)]	Width [inch (mm)]	Height [inch (mm)]	Fastening Holes		t [inch (mm)]
				Flange A	Flange B	
0.18 kips (0.8 kN)	11 (280)	4 (100)	2-1/8 (54)	3Ø7/16" / 5Ø1/4" (3Ø11 / 5Ø6)	3 Ø7/16" / 5Ø1/4" (3Ø11 / 5Ø6)	3/16 (4)
0.54 kips (2.4 kN)	11 (280)	4 (100)	2-1/8 (54)	3Ø7/16" / 5Ø1/4" (3Ø11 / 5Ø6)	3Ø7/16" / 5Ø1/4" (3Ø11 / 5Ø6)	3/16 (4)
1.35 kips (6 kN)	11 (280)	4 (100)	2-3/8 (60)	3Ø7/16" / 5Ø1/4" (3Ø11 / 5Ø6)	3Ø7/16" / 5Ø1/4" (3Ø11 / 5Ø6)	1/4 (6)





## MECHANICAL PROPERTIES

- Characteristic strengths and stiffnesses per connection per direction obtained from mechanical testing.
- Valid for one bracket timber to timber.
- Applicable for moisture content in service class 1 & 2 (EN 1995-1-1:2004+A1:2008).
- Referential values valid when using 3 HECO-TOPIX-plus 3/8"x4" (10x100 mm), flange head screws (ETA-19/0553) per flange, and CLT C24 of 4-3/4" (120 mm) thickness with 3 layers of 1-9/16" (40 mm).
- Extension of these values to other fasteners or other CLT types should be assessed according to the existing regulations by the structural engineer of the specific project.
- The amount of brackets per linear meter needs to be calculated on a project basis by the structural engineer.

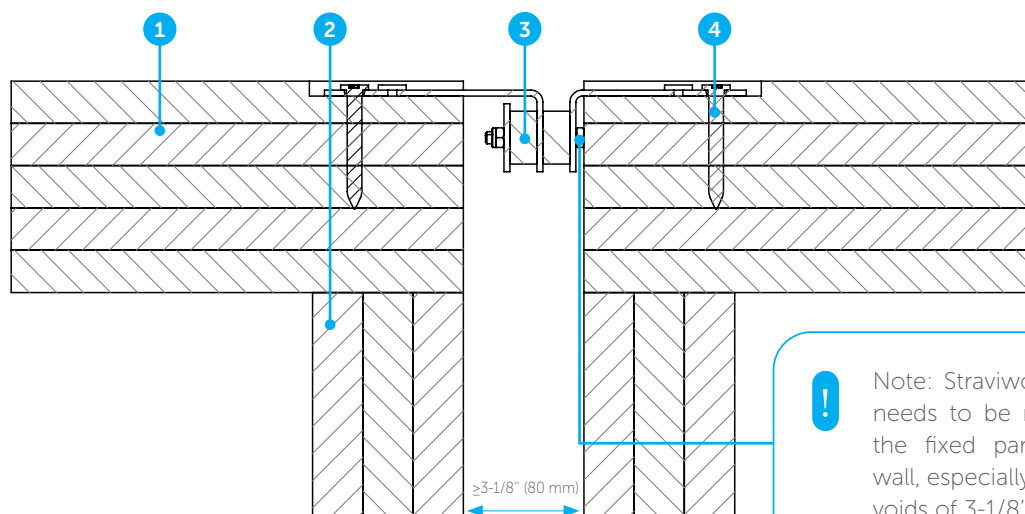


	R <sub>1/2,d</sub> [kips (N)]	R <sub>1,k</sub> [kips (N)]	K <sub>ser,1</sub> [kips/in (N/mm)]	R <sub>2,k</sub> [kips (N)]	K <sub>ser,2</sub> [kips/in (N/mm)]	R <sub>3,k</sub> [kips (N)]	K <sub>ser,3</sub> [kips/in (N/mm)]
<b>0.18 kips (0.8 kN)</b>	0.18 (800)	0.85 (3762)	1.61 (282)	1.59 (7075)	2.16 (378)	0.41 (1814)	0.87 (153)
<b>0.54 kips (2.4 kN)</b>	0.54 (2400)	>0.85 (3762)*	>1.61 (282)*	>1.59 (7075)*	>2.16 (378)*	>0.41 (1814)*	>0.87 (153)*
<b>1.35 kips (6 kN)</b>	1.35 (6000)	>2.12 (9430)	>1.61 (282)*	2.84 (12633)	>2.16 (378)*	>0.41 (1814)*	>0.87 (153)*

\* values to be confirmed by testing.



## TYPICAL ASSEMBLIES



- 1. Structural CLT floor
- 2. CLT wall

- 3. Straviwood ModuLink
- 4. Screws



Note: Straviwood ModuLink needs to be mounted with the fixed part against the wall, especially when used in voids of 3-1/8" (80 mm).

# **WILHAMS**

**Wilhams Insulation Far East Sdn Bhd**

15 & 17 Jalan Utarid U5/23  
Mah Sing Integrated Industrial Park  
40150 Shah Alam, Selangor, Malaysia  
Tel : 603-7846 6728  
E-mail : [wilhams@wilhams.com.my](mailto:wilhams@wilhams.com.my)  
Website : [www.wilhams.com.my](http://www.wilhams.com.my)

## DISCLAIMER

This information is accurate to the best of our knowledge at the time of issue. Information, data and recommendations provided are based on industry accepted testing and prior product usage. It is intended as descriptive of the general capabilities and performance of our products and does not endorse applicability for any particular project. We reserve the right to change products, performance, and data without notice. This document replaces all information supplied prior to the publication hereof.